

Roger Thomas Glass

Choosing a size

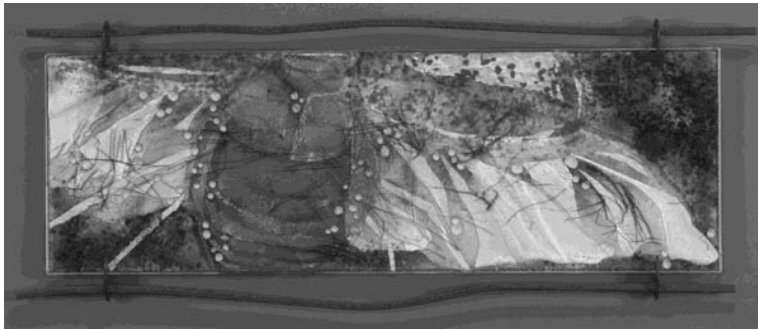
Each size and frame style has a descriptive name.

THE BANNERS:

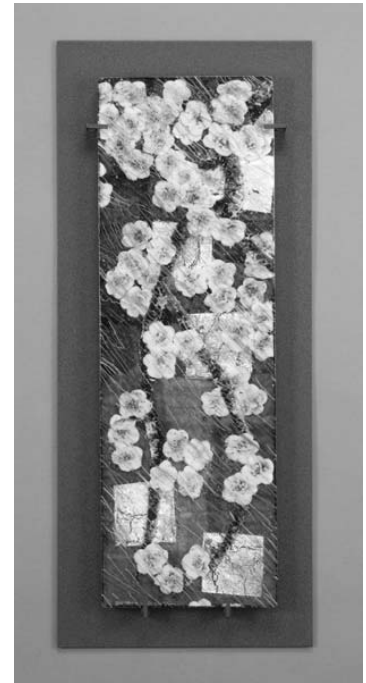
11 Inches by 33 Inches,

Frame Choices: Vertical or Horizontal,

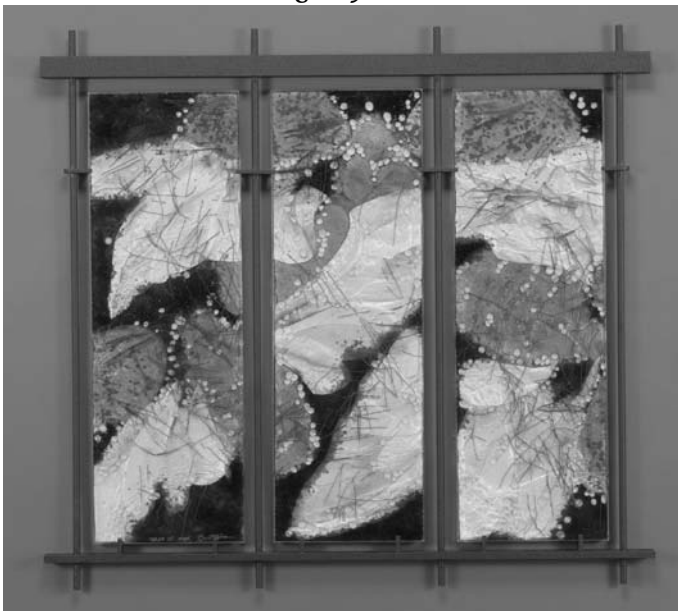
Matt or Wire



*11 x 33" **Horizontal** "Wiggly" **Wire** Frame
Overall: 15"high by 36"wide*



*Vertical 33 x 11" **Matt** Frame
Overall: 35"high x 18" wide*



***Three up:** Above, a triptych of three vertical 33 x 11" Banners*

Overall dimensions: 41" high by 44" wide

*Below, a smaller 11 x 18" Banner in
the "Wiggly" frame:*



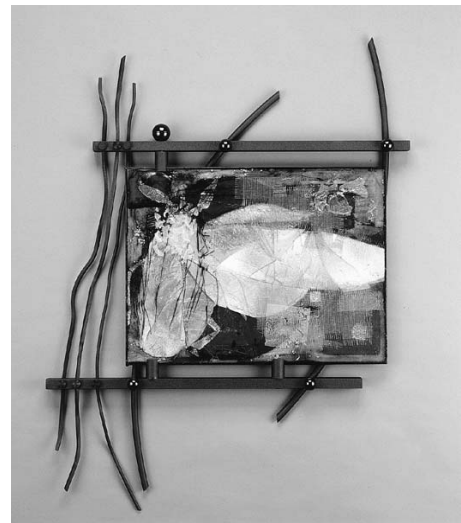
Roger Thomas Glass Art

THE SMALL PANELS,

*Including the S.A.R.,
and the Small Matts:
Glass measuring
15 to 20 Inches high by
18 to 24 Inches wide.*



Choosing a size



Examples:

*Above: S.A.R. frame with 15 x 20"
panel. Overall: 36" high by 30" wide*

*Left: Matt Frame with 19 x 23"
'Impressions' panel.
Overall: 24" high by 28" wide*

*Below: Vertical matt frame with
21 x 16" 'Impressions' panel.
Overall: 26" high by 21" wide*

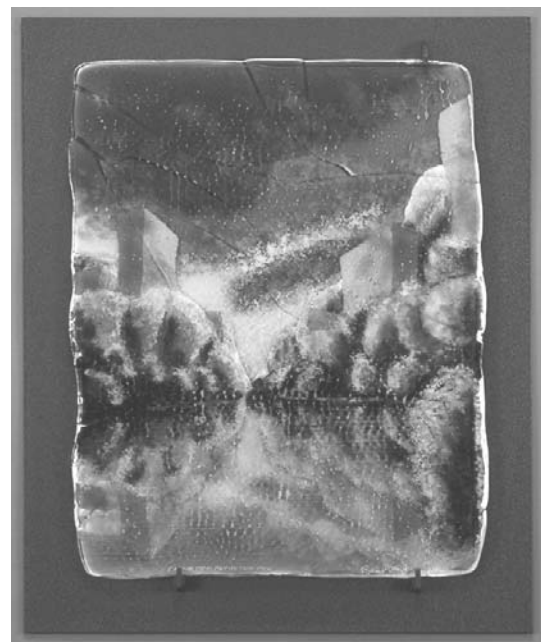
Glass Panel descriptions

Straight-edged Panels

*The multi-panel pieces and the works
for the Stick, Wriggly or Big Twig
Frames are generally rectilinear and
flat on the edges.*

Impressions panels

*The 'Impressions' glass panels have
an organic, irregular edge and look
best mounted on the Matt frames.
They are usually single panel works.*

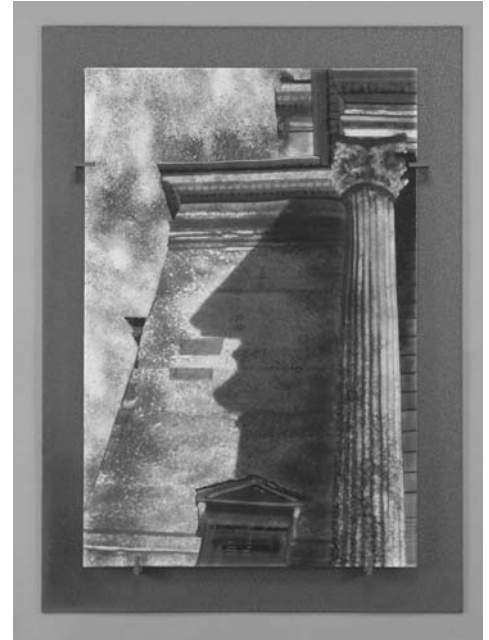
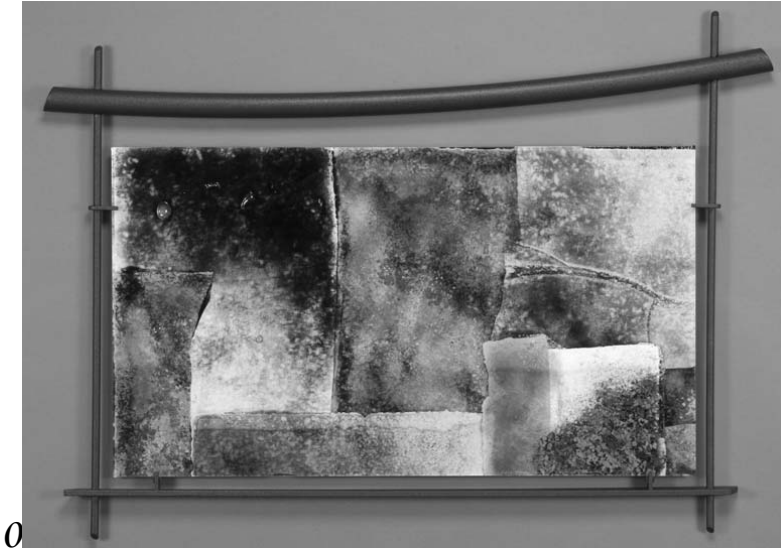


Roger Thomas Glass Art

Choosing a size

The Standard Panels: 22 by 33 Inches, up to 24 by 40 inches

vertical or horizontal



Top, Left: 22 x 39" panel in 38 x 47" Stick frame

Top, Right: 33 x 22" panel on 38 x 28" vertical Matt frame

Below, Left: 35 x 22" panel in 40 x 30" Headliner frame

Below, Right: 23 x 40" panel on 32 x 45" horizontal Matt frame



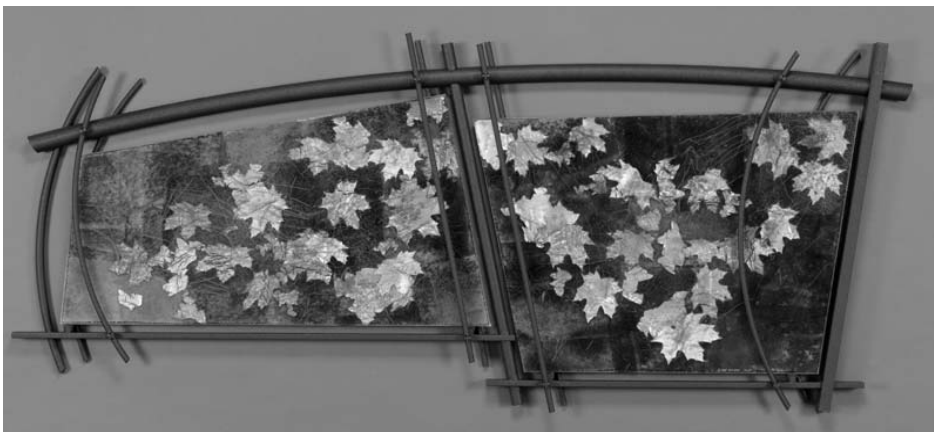
Roger Thomas Glass Art

Choosing a size

The Diptych As the size of the overall structure increases, multiple panels are mounted on a single frame. The styles have distinctive names.



*The HARVEST frame:
Two Panels, each 19 by 20 inches.
Overall dimensions: 38" h x 54" wide.*

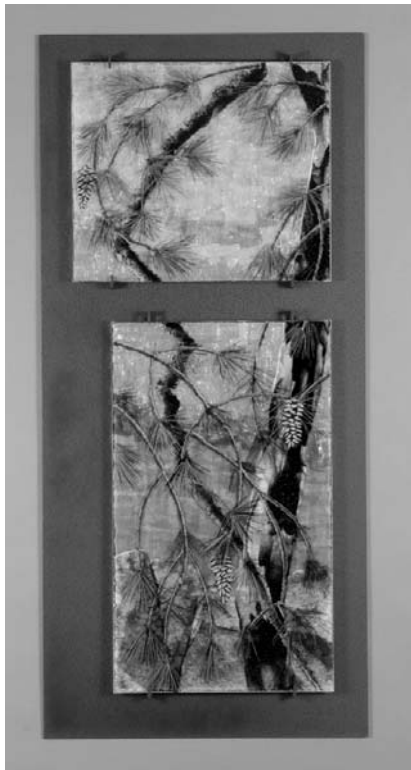


*Double Headliner:
Overall frame dimensions:
38" high x 82" wide*



*The Pinus Frame
Holds two, 22 x 33" panels
Overall dimensions:
43" high by 84" wide*

Vertical Diptych



Three styles of Vertical Diptych:

*Upper left: **Six Foot Vertical Matt**
Overall dimensions: 72" high by 34" wide*

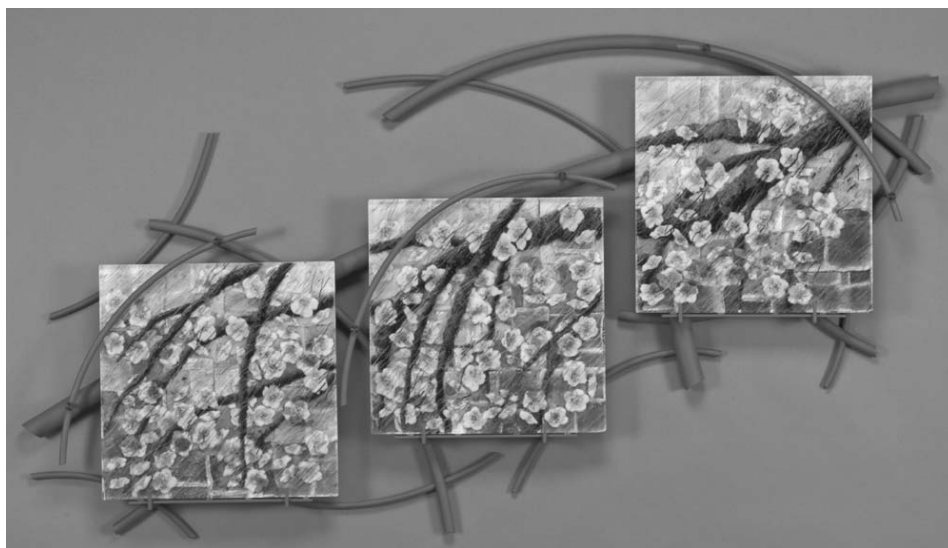
*Upper right: **Six Foot Free-Standing Frame**
This design holds two, double-sided panels, and can be viewed from either side. Available as commission only.
Overall dimensions: 79" high by 30" wide*

*Left: **Six Foot Simple Stick Frame**
Overall dimensions: 77" high by 44" wide*

Triple Panel Frames



Above: The Estes Frame: 38" high by 78" wide; Three different sized panels



Above: The Planetree Frame: 42" high by 72" wide; Three 19 x 20" panels

The Big Twigs



These largest works from Roger Thomas' studio are each individually created to hold a collection of multi-sized panels. The dimensions range from 4 to 5 feet in height and 8 to 10 feet in width.

